

2020

createchange



FAMILIES FIRST
OF PALM BEACH COUNTY

Stronger Families - Stronger Communities



Creating Change takes a Community... WE THANK YOU.

This year has proven how strong our staff and clients really are. The year began as it always does, with amazing people like you giving us the support we need to Create Change for the betterment of the families served.

The COVID crisis arrived, and our staff did not let it stop them. Families First continued to work diligently with our clients and their families to provide therapeutic and basic need services.

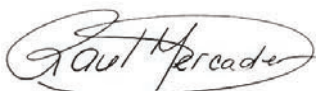
Although our families were in desperate need due to challenges with transportation, lack of employment, or had serious health issues, it was because of your generosity that we were able to assist them. Our staff distributed gift cards so families could purchase food, delivered diapers, PPE's (masks, hand sanitizers, etc.) and other basic necessities across Palm Beach County. When we reached out to you for help, you were there.

Later we were faced with assisting many of our 1100 families that did not qualify for assistance or were still waiting for stimulus checks to arrive. Although state regulations should prevent anyone's utilities from being turned off or evictions from starting, many of our families faced both of these challenges. Once again, with your support our staff made this a priority and we prevented this from happening and provided for these families.

We also began providing therapeutic services, case management and outreach using telehealth platforms. Families First staff used this technology to keep in close contact with our clients to make sure children were safe and parents were coping with stressful conditions in a healthy manner.

There is no doubt 2020 came with many challenges. Your vital support helped us continue our work and create the change we needed to keep our programs running and support our most underserved and vulnerable community.

Thank you from the bottom of our hearts,

A handwritten signature in black ink, reading "Raul Mercader", enclosed within a thin, hand-drawn oval border.

Raul Mercader
President of the Board

A handwritten signature in black ink, reading "Julie Swindler", written in a cursive style.

Julie Swindler, LCSW
Chief Executive Officer

creating change made a difference ...



1100

community members who have taken part in Families First events, volunteered, and contributed financially.



180

pregnant women received HIV testing, substance abuse treatment, and **access** to prenatal care.



823

Children have remained out of the child welfare system by giving parents the tools they need to use **positive discipline** techniques, coping with stress, and setting and achieving short- and long-term goals.



\$353,745

in **funding** prevented individuals diagnosed with a medical or psychological disability from experiencing homelessness in Palm Beach County.



81.75%

of children and teens improved their behavior, preventing disruption and increasing their ability to learn in school and **thrive** at home.



\$1,685,338

invested in creating safe, positive environments and healthy growth outcomes for at-risk children.




\$6,203,519

in **savings** by the community through Families First services of successfully reducing negative long-term developmental impact of stress and severe trauma on infants and toddlers.



create hope
and a life
will be changed



Jimena is a Guatemalan pregnant mom who was 22 weeks along when she found out she was positive for HIV. Jimena struggled with this devastating news; however, she was not alone, she was working with Maura, a TOPWA outreach worker.

Maura was there to help her cope, give her encouragement and provided post-test counseling services as well as important education around HIV. Like many of our diverse staff, Maura speaks the Guatemalan dialect of Kanjobal and, through translation assistance, helped Jimena obtain SOBRA Medicaid and assisted her with crucial prenatal and infectious disease management.

Maura worked closely with Jimena to ensure she was taking her medications and keeping medical appointments. Jimena gave birth to Sofia, a beautiful baby girl. After Sofia was born, it was critical that Maura continued her work with Jimena. She assisted her with accessing Baby RxPress, which enabled baby Sofia to obtain life-saving medications. Maura continued with home visits to ensure Baby Sofia was taking the medication. Because of crucial preventative care and medicine, Baby Sofia tested negative for HIV. Jimena cried tears of excitement and knew she owed this lifesaving news to Maura and the TOPWA program.

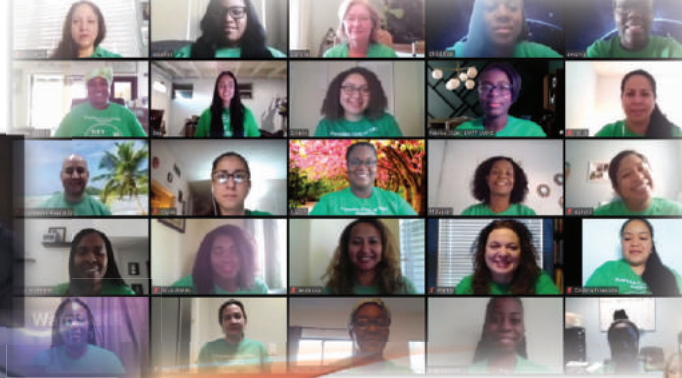
166 pregnant women enrolled and received free HIV and pregnancy testing and HIV & STD education through our Targeted Outreach for Pregnant Women Act program.

An additional **14** HIV+ pregnant women accessed prenatal and infectious disease care and medication.

How CHANGE saves lives

- Reaching out to high-risk women by searching street corners, homeless shelters, laundromats, public parks, and other places they may be found so we can provide them with the help they desperately need.
- Gaining trust and offering services that include access to health insurance and prenatal care; Free pregnancy and HIV testing, and substance abuse treatment.
- Educating women on safe sexual practices and healthy lifestyles so that they learn to make better choices for themselves and the well-being of their new child.
- Connecting women and their children with much-needed items like clothing, diapers, food, and transportation, so they have the tools to work toward a better future.

Thank you for joining us!



you create community



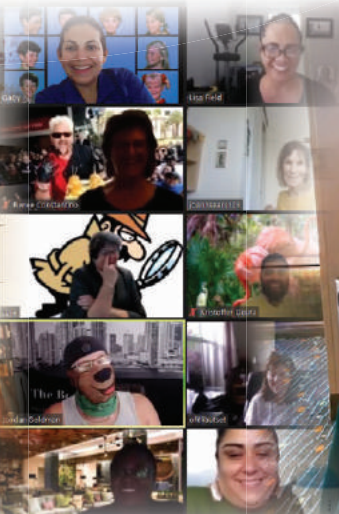
CONNECTING USING TECHNOLOGY

What is Telehealth?

- According to the U.S. Dept. of Health and Human Services, telehealth is the "use of electronic information and telecommunications technologies to support and promote long-distance clinical health care, patient and professional health-related education, and public health and health administration." (Dept. of Health and Human Services, p. 2)
- Technologies include video conferencing, the internet, streaming media, landline and wireless communications (Dept. of Health and Human Services)
- Services may be provided through audio, text messaging, or two communication technology (Dept. of Health and Human Services)



Mack Bernard
Commissioner





Stronger Families
Stronger Communities
FamiliesFirstPBC.org

Greece





support and
compassion can
change
everything

At the age of 58, Georgia was happily raising her 18-year-old son, Michael. She also had an adult daughter Megan suffering from substance abuse who had an 8-year-old daughter Shianne who unfortunately lived in that environment. Shianne's dad had disappeared and eventually, Shianne moved in with her grandmother to avoid the growing toxic situation.

Georgia was referred to Families First of Palm Beach County for their Kin Support services when she realized she couldn't do it alone. She was overwhelmed, stressed out, and anxious. Georgia would say: "I don't know how I am going to do it"; "this is too much"; "I am already responsible for my son and now I have a second child." And to make things worse, both her son and granddaughter argued a great deal.

Through supportive counseling, her Kin Support coordinator, Marcela, worked on building trust with Georgia. With Marcela's guidance, Georgia developed techniques to alleviate her stress and tension. She learned breathing exercises, self-care practices, and mindful meditation techniques. During home visiting, Georgia discussed doing things as a family and strengthening the relationship between Michael and Shianne. Marcela was able to build a relationship with all three family members through conversations about how the transition has been an adjustment for all.

Today, both children are getting along much better. Georgia is less anxious and coping well; even her son notices how helpful Kin Support has been by strengthening the family bonds. Marcela helped the family apply for benefits and subsidized after school care to help Georgia adjust to the new living situation.

With the help of Marcela and Kin Support, Georgia ultimately obtained legal custody of Shianne through Legal Aid Society.

100%

of families remaining in services or were successfully closed did not result in Foster Care Placement.

How strong families are created

- By providing counseling and education, so families have the tools they need to be successful.
- By hosting support groups so grandparents and other relatives can learn from each other.
- By offering financial guidance to families who want to provide a better life for loved ones.
- By connecting families to legal services, economic benefits, healthcare/health insurance, and Individual/family therapy.
- By ensuring children receive educational services through the school system.

revenue and expenses



Reflects fiscal year ending September 30, 2020



annual contributions and revenue

Government Support

\$4,021,393

Community Support

\$205,829

Foundation Grants

\$538,935

Other Support

\$180,511

Fundraising Events

\$223,673

In-Kind Revenue

\$398,987

Investments

\$56,809

Total Revenue

\$5,626,137

agency expenses

Program Services

\$4,632,127

Supporting Services

\$865,966

Fundraising Events

\$49,103

Total Expenses

\$5,547,196

Families First is audited by the independent CPA firm of Templeton & Company, LLP, which conducted its examination in accordance with Generally Accepted Auditing Standards and Government Auditing Standards. Templeton & Company, LLP, rendered an unmodified opinion that the financial statements are fairly stated in accordance with generally accepted accounting principles in the United States of America for the fiscal year ended September 30, 2020. If you want a copy of the audit or the 990, please feel free to contact the office at 561-721-2887 or you can get them on our website at www.familiesfirstpbc.org.

funders **and contributors**

Reflects fiscal year ending September 30, 2020

government and agency

Children's Services Council of Palm Beach County
Department of Housing and Urban Development
Florida Department of Health
Health Care District of Palm Beach County
Palm Beach County Board of County Commissioners
School District of Palm Beach County
The Ounce of Prevention Fund of Florida
Town of Palm Beach United Way
United Way of Palm Beach County

\$25,000 plus

Allegany Franciscan Ministries
Community Foundation for Palm Beach & Martin Counties
Libra Foundation, Inc.
Lost Tree Village Charitable Foundation
Miami Diaper Bank
Quantum Foundation
The Batchelor Foundation, Inc.
The Jim Moran Foundation
The Mary Alice Fortin Foundation, Inc.

\$10,000 to \$24,999

Bank of America Charitable Foundation
Children's Healthcare Charity, Inc.
Conrad Hilton Foundation
IBIS Charities Foundation, Inc.
Itto Willits Charitable Foundation
Scaife Family Foundation
Leon & Shirley A. Schwartz

\$5000 to \$9999

A Friend in Palm Beach Gardens
AmFund
BMO Harris Bank N.A.
Boca Rio Foundation, Inc.
Castle Group
CBIZ Insurance Services, Inc.
Constitutional Tax Collectors, Palm Beach County
Jeff & Frances Fisher
Law Enforcement Trust Fund
Eddie & Jo Ann Sears
TD Bank Charitable Foundation
Two Men and a Truck, Palm Beach & Treasure Coast
Wycliffe Charities Foundation, Inc.

\$2,000 to \$4999

Sherry Borchert
Greg & Paula Cryan
Michael & Sandra B. Fleming
Florida Power & Light Company
H.E. Hill Foundation, Inc.
Haile, Shaw & Pfaffenberger, P.A.
Impact Landscaping & Irrigation, LLC
Integrated Data Technologies
Tami R. Lesser
Network For Good
Pike & Lustig, LLP
Rehmann
Dave & Judith Schumacher

\$500 to \$1,999

Pira Amirsaleh
Claudia Barto
BBVA
Peter Bonneau
Michael & Michelle Borenstein
John A. Caracuzzo
Charity Services Centers PA
Jennifer Chiarenza
Bret & Kay Danilowicz
Equestrian Sport Productions
Michael & Heather Floyd
Gallagher
Michael & Phyllis Gauger
Tim & Mary Gavin
Jordan & Stacey Goldman
Byrnes Guillaume
Kathleen Hillman
Gary & Alice Hodach
IOA Risk Management
Kaufman Rossin
Julie Kime
Law Offices of John M. Howe
Fred & Barbara LeBrun
Lesser, Lesser, Landy & Smith, PLLC.
Daniel & Dara Lustig
Domenick & Jennifer Macri
James & Dolores Mahlbacher
Michael & Kim Mahlbacher
Jon & Kristi Maples
Matrix Private Capital Group

Schwab Charitable
The Unitarian Universalist
Fellowship Boca Raton
U.S. Bank Private Wealth
Management
Rick & JoAnn Wagner
Ward Damon P.L.

McLaughlin & Stern, PLLC
Warren & Barbara McQuinn
Raul & Michelle Mercader
James & Cindy Nau
Ronny & Eniscia Nuñez
One Parking
Palm Beach Flagler Rotary
Foundation, Inc.
Quantum Realty Advisors, Inc.
Monte & Sheri Resnick
SageView Advisory Group
Seacoast Bank
Searcy Denney Scarola Barnhart &
Shipley, P.A.
Valerie Staggs
Ted & Julie Swindler
TBC Corporation
Templeton & Company
The Robert and Alison Torrington
Family Charitable
Joan Thiemann
Toshiba Business Solutions
Dr. Ofelia Utset & Dr. Tom Kodadek
WEST PALM 100
Wes Wiggins



"We all want to make an impact to help our community. During the Covid-19 pandemic, just like every downturn in the economy, nonprofits become the support system helping those most in need. For many clients, this was the first time they needed help and our local nonprofits answered the call. Unfortunately after an economic downturn, such as the one we are currently in, funding cuts occur which leave many programs vulnerable. We know that when times are toughest, we are needed the most. In order to continue our services and ensure that there is no family that goes unserved, we are focused on growing our endowment fund which provides financial support to Families First. Please consider a Legacy Gift to Families First Foundation to help those in our community when it's needed most."

Domenick V. Macri, Sr.
Foundation Board President

forever families legacy society



Learn how you can join the Forever Families Legacy Society and create change right here in Palm Beach County. Your gift to us will ensure our life-changing efforts can continue for decades to come.

Visit FamiliesFirstPBC.org to learn more.

"When you improve the life of a child that is the most significant contribution you can make."

Betty Batson Bell
1990 Founding Board Member

funders



corporate partners



accreditations



board of directors

Raul Mercader, President
Jennifer Chiarenza
Sandra Fleming
Michael Floyd, CPA
Dena Sisk Foman, Esq.
Chief Deputy Michael Gauger, MSW
Bari Goldstein, Esq.
Byrnes Guillaume, Esq.
Barbara LeBrun, SIOR
Daniel Lustig, Esq.
Jon Maples
Barbara McQuinn
Eileen Minnick, CTFA
James R. Nau
Ronny Nuñez
Kristina Pantelides
Judith Schumacher
Jim Springer
Ofelia Utset, MD, MBA

foundation board

Domenick V. Macri, Sr., President
Mary Aguiar
Greg Cryan
Jordan Goldman
D. Guy Guenthner
Francis X.J. Lynch, Esq.
Brian Mangines, Esq.
Raul Mercader
James R. Nau
Bao Nguyen
Monte Resnick
James Schumaker
Jo Ann Sears, MSW
JoAnn Wagner, CPA
Pedro Zamora



FAMILIES FIRST

OF PALM BEACH COUNTY

Stronger Families - Stronger Communities

WEST PALM BEACH OFFICE

3333 Forest Hill Blvd.
2nd Floor
West Palm Beach, FL 33406
(561) 721-2887

WELLINGTON OFFICE

12300 South Shore Blvd.
Unit 210
Wellington, FL 33414
(561) 283-0635

BELLE GLADE OFFICE

1500 NW Avenue L
Suite B
Belle Glade, FL 33430
(561) 996-8710

FamiliesFirstPBC.org

